

Nanango State High School

BYO Program



Intune Onboarding Windows 11 Version

(25H2)

Revised 1/2026



Getting your BYO device ready for school: Intune

Windows 11 version

Intune is a secure mobile management system that allows you to use school Wi-Fi, emails, learning applications and websites on personal devices.

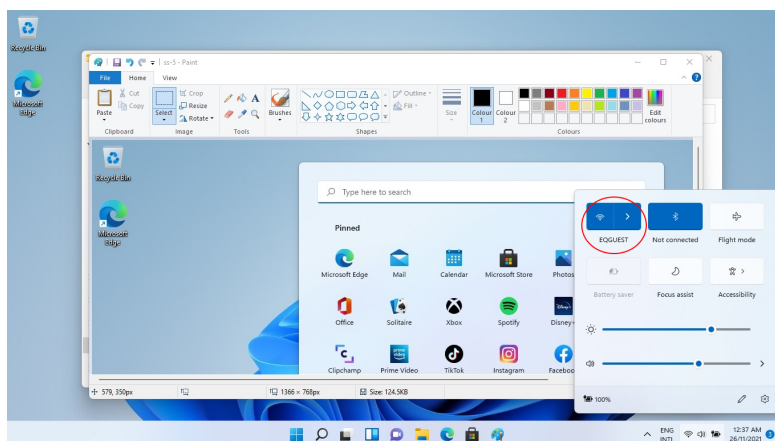
These instructions will show you how to enrol a BYO Windows device into Intune and install an application. This process may take up to 15 minutes to complete.

Before you start, please have ready the email address and password that has been supplied to you by the school. If you do not have this information, you will not be able to successfully complete the installation. Please contact your school to obtain these details.

These instructions are for Windows 11, version 25H2. You may find some of the screens look different to the ones provided here if you have an different version of Windows or there are changes made to Intune.

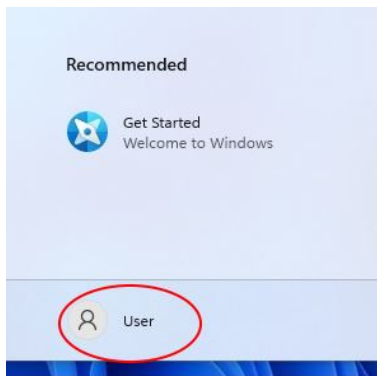
If the installation fails at any time, please restart your device and try again.

How to onboard your device with Intune

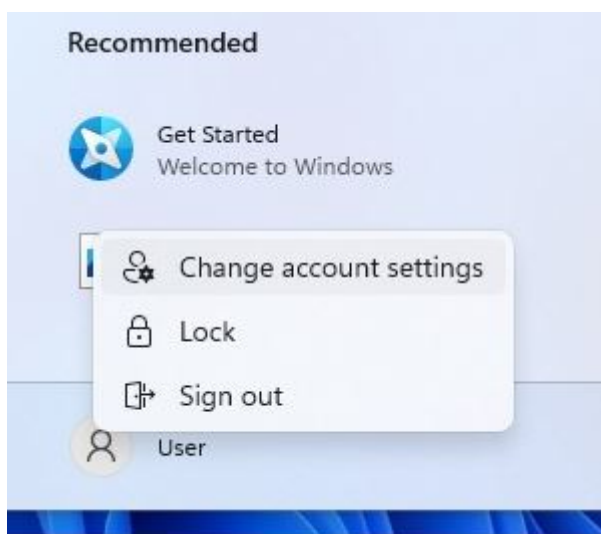


Make sure you are connected to the **EQQUEST** Wifi network

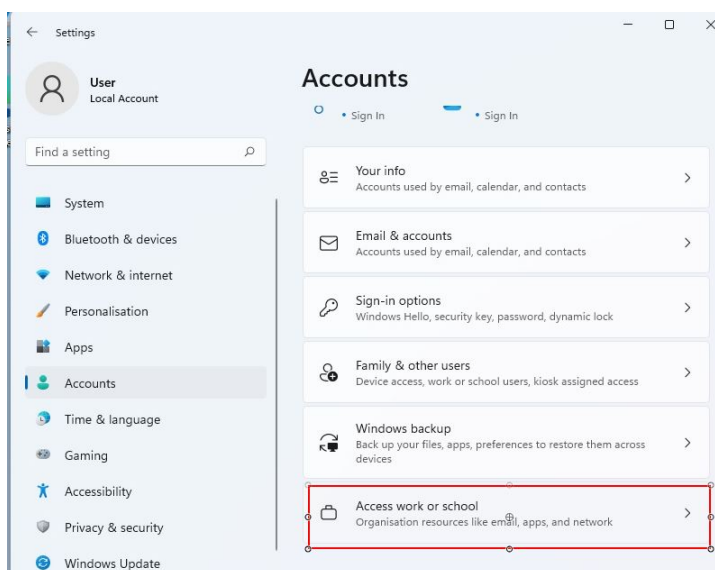


Step 2

Click on the Start symbol, then select the **person** icon.

Step 3

Select **Change account settings**.

Step 4

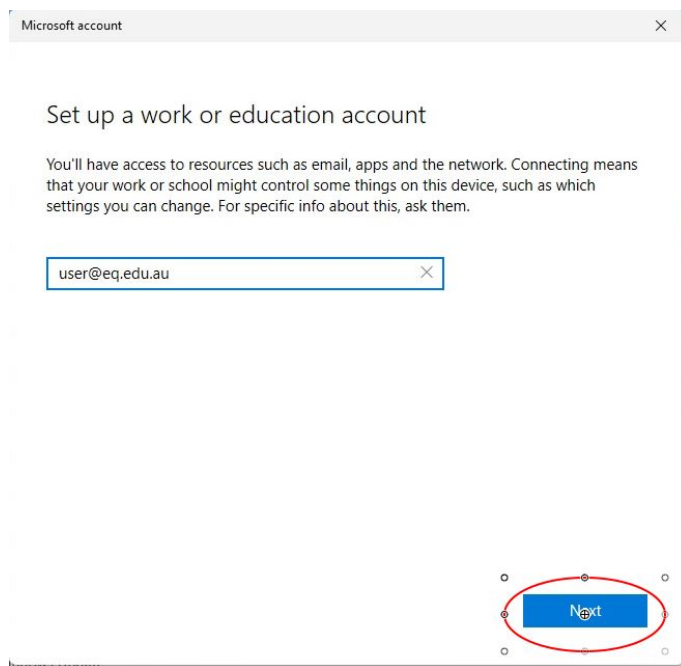
Select **Accounts** then

Select **Access work or school**.

If your account is already listed, select it and then select **Disconnect**.

Then select **Connect**.



Step 5


Microsoft account

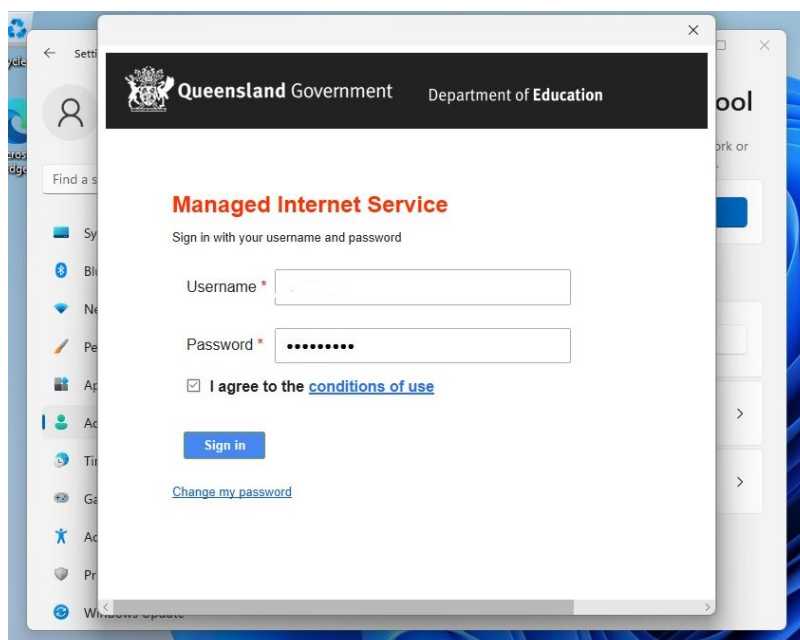
Set up a work or education account

You'll have access to resources such as email, apps and the network. Connecting means that your work or school might control some things on this device, such as which settings you can change. For specific info about this, ask them.

user@eq.edu.au

Next

Enter your school
@eq.edu.au **email**
address and select **Next**.

Step 6


Queensland Government Department of Education

Managed Internet Service

Sign in with your username and password

Username *

Password *

☒ I agree to the [conditions of use](#)

Sign in

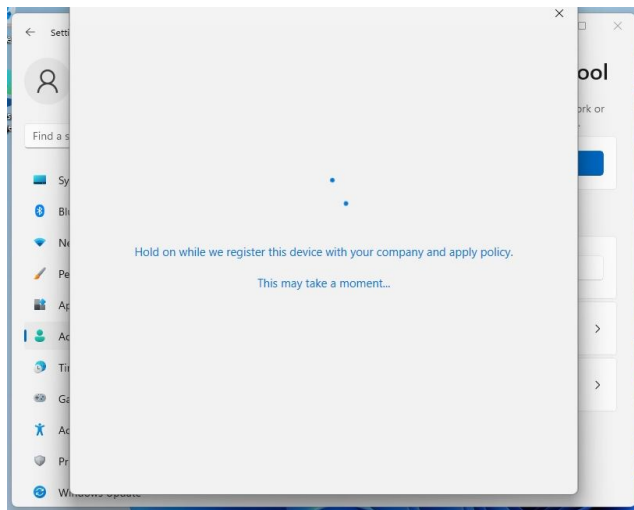
[Change my password](#)

The username may appear in the Username field in the Managed Internet Service screen.

If not, please enter your **username**, password, accept the terms and conditions, and **Sign in**.

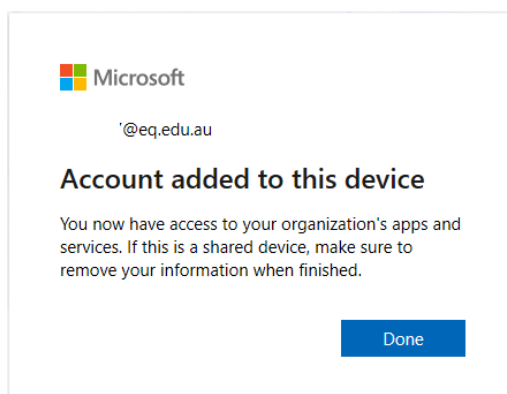


Step 7



Please wait while the system is processing your request. This can take a few minutes. Make sure you stay connected to the network.

Step 8



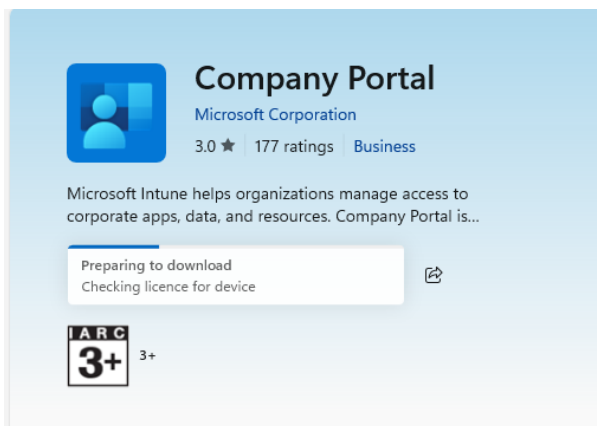
When finished the 'Account added to this device' message will be displayed. Select **Done**



Step 9

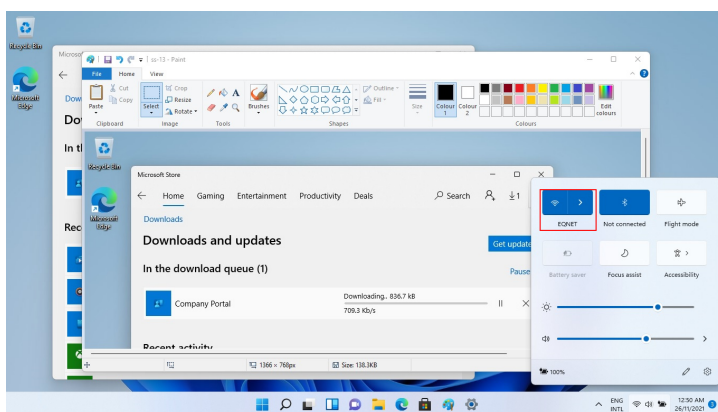
Wait a few minutes for the Company Portal app to download and install.

If the Company Portal app does not automatically install, go to the Microsoft Store, search for "Company Portal" and click on "Get" to download it.



Step 10

Then restart your device. Your device might request a password change upon reboot. After reboot, make sure your device is connected to the **EQNET** WiFi network. This will happen automatically and no username / password is required.



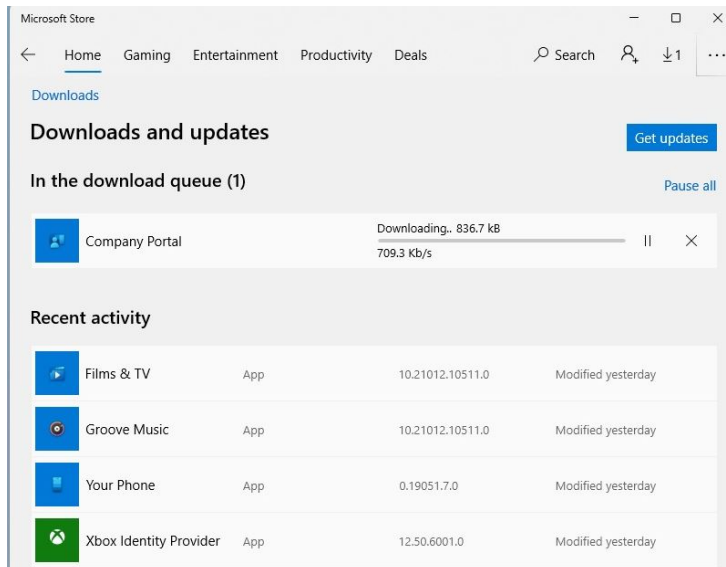
When your device has restarted, the Intune set up is completed. It may take up to 15 minutes to finish installing. You can use your device in the meantime but please keep it connected to the internet.

You are now ready to install the apps your school has recommended.



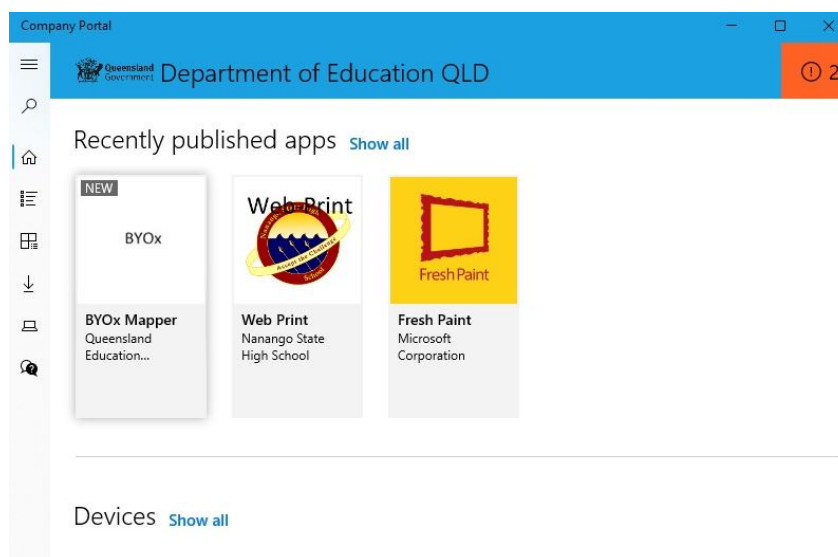
How to install an app

Step 1



If the Company Portal has not been installed in the previous steps, go to the **Microsoft Store** and Search for 'Company Portal' then select 'Install'.

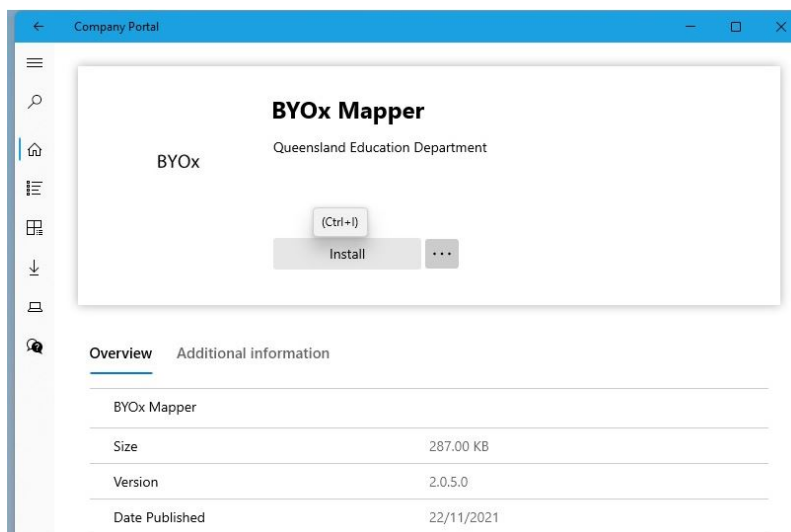
Step 2



Open the Company Portal App from the Start Menu. Select **Show all** to see the apps your school has made available to you.



Step 3



At Nanango State High School you need to install the **BYOx Mapper** app.

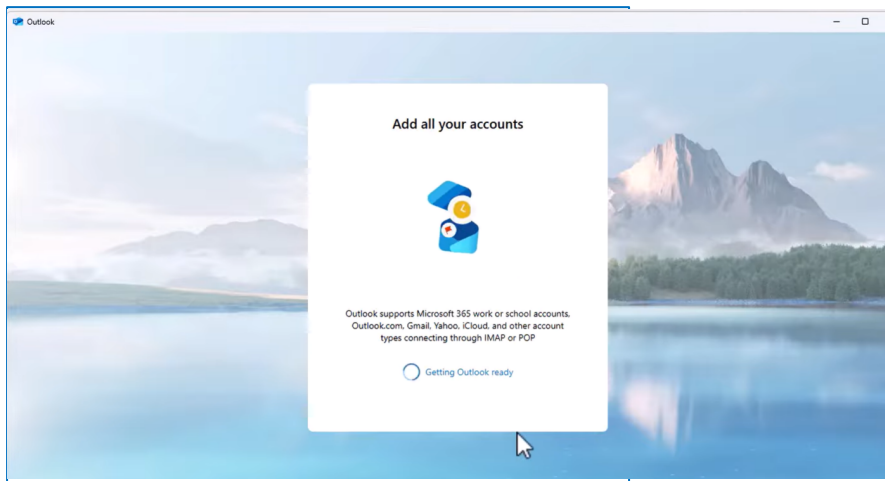
Click on the App Icon and then the Install button to download and install the app.

BYOx mapper is need to access G: and H: drives as well as the schools printers. It must be run every time after you restart your laptop at the school.

Next, you can set up your school mail account.



How to set up mail



Open your mail app by selecting the **Outlook** icon.

Outlook will automatically select your account and will perform a short setup process. Wait for that process to finish.

Once the setup process is finished, Outlook will restart and is now ready to use. Other mail apps can be used. Please refer to the setup instructions for your chosen mail app.

You might also want to download and install Microsoft Office 365, which is available free of charge for Education Queensland students. Go to <https://portal.office.com/account> and select "Install Office"

A detailed guide is available on the Nanango State High School website, or at admin.

Your device is now ready for school. If you need help with onboarding, an app or mail account, please see your school for assistance.

